



Utica Heating 16 Series 鍋爐是一種經濟實惠的燃氣蒸汽采暖設備。

特色

■ 優質熱交換器設計 -

16 Series 具有可靠的鑄鐵熱交換器和鑄鐵壓入式接頭。加熱時，切口和壓入式接頭以相同的速率膨脹。透過使用類似材料代替廉價的墊圈或鋼製接頭，鍋爐保持優良的水密封。

■ 效率 -

根據美國能源部的認證，16 Series 的年度燃料利用效率高達 82.7%。

■ 易於安裝和維護 -

16 Series 具有一體式引風罩和通風阻尼器。其小巧緊湊的設計使其成為狹窄空間安裝的理想選擇。

■ CycleGard CG400 低水位保護裝置 -

CycleGard 低水位保護裝置具有間歇性水位測試功能。這一重要特性提高了對真實水位信號的辨識和對錯誤信號的排除機能，錯誤水位信號可能由鍋爐內的泡沫和揮發性水質條件所引起。間歇性水位測試以預設的時間間隔來關閉鍋爐的供電。在測試期間泡沫消散且真實水位穩定 - 在這種條件下 CycleGard 能保證監測鍋爐中的真實水位，確保安全和準確的鍋爐運行。

■ 包換 -

十年有限制條件的換熱器包換。

16 SERIES

燃氣蒸汽鍋爐

STANDARD EQUIPMENT:

- Assembled boiler with insulated jacket
- Completely installed and wired gas control system
- 24 Volt Transformer
- Flame Roll-Out Safety Shut-Off Fuse Link (Roll-Out Switch) with Space Fuse Link included and Blocked Vent Safety Shut-Off Manual Reset Disk Thermostat (Spill Switch)

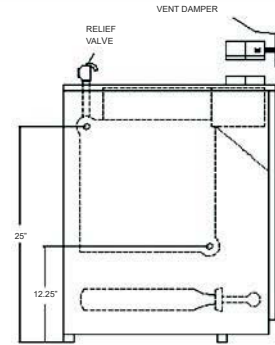
Electronic Low Water Cut-Off

- Pressure Limit Control
- Steam Pressure Gauge
- Glass Water Level Gauge
- 3/4" Boiler Drain Valve
- 15 psi ASME Pop Safety Valve

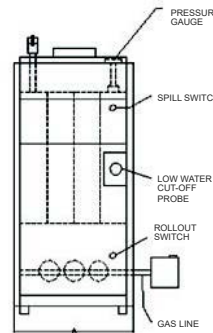
- (2) 2 1/2" Supply Tappings
- (2) 2 1/2" Return Tappings
- (2) 2 1/2" Square Head Pipe Plugs to plug unused supply and return tappings

OPTIONAL EQUIPMENT:

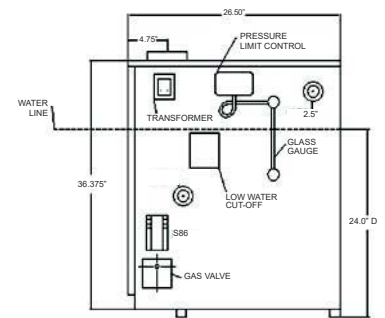
- Propane conversion kits available



LEFT SIDE



FRONT



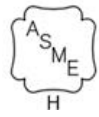
RIGHT SIDE

Specifications: (All ratings and specifications subject to change)

Model	Input Rate Nat./LP (MBH) ⁽¹⁾	Heating Capacity Nat./LP (MBH) ⁽¹⁾	Net AHRI Rating Nat./LP ⁽¹⁾			No. of Sec.	Vent Pipe Size	AFUE %
			Steam*	Steam (Sq. Ft.)	Steam (MBH)			
UH1603HSID	75/70	62/58	1.33	196/183	47/44	3	5"	82.7/82.7
UH1604HSID	112/105	91/85	1.33	283/267	68/64	4	6"	82.0/80.4
UH1605HSID	150/140	122/114	1.33	383/358	92/86	5	6"	82.0/80.6
UH1606HSID	187/175	153/143	1.33	479/446	115/107	6	7"	82.0/80.9
UH1607HSID	225/210	183/171	1.33	571/533	137/128	7	7"	82.0/81.1
UH1608HSID	262/245	214/200	1.33	671/625	161/150	8	7"	82.0/81.3
UH1609HSID	299/280	245/229	1.33	767/717	184/172	9	7"	82.0/81.5

(1) MBH = 1,000 Btuh. Btuh = British Thermal Unit Per Hour.

- For altitudes above 2,000 ft. reduce input rate 4% for each 1,000 ft. above sea level.
- Heating Capacity is based on DOE (Department of Energy) test procedure.
- *Net AHRI steam ratings shown are based on a piping and pickup allowance of 1.333.
- Base selection of boiler size on "Net AHRI Rating" being equal to or greater than installed radiation in square feet. Consult manufacturer before selecting a boiler for installations having unusual piping and pickup requirements, such as intermittent system operation, exhaust piping systems, etc.



C.S.A Certified For Natural Gas or Propane

Tested for 100 psi. ASME Working Pressure



ECR International Inc. 2201 Dwyer Avenue, Utica, NY 13501
Tel. 800 253 7900
www.ecrinternational.com

All specifications subject to change without notice.
©2018 ECR International, Inc.
PN 240011635_MN Rev. 10/18