

CONTROL MODULE REPLACEMENT KIT #550002965 INSTRUCTIONS CHB-100, CHB-130 and CCB-150

Kit installation shall be completed by qualified agency.

⚠ WARNING

Fire, explosion, asphyxiation and electrical shock hazard. Improper installation could result in death or serious injury. Read this instruction and understand all requirements, including requirements of authority having jurisdiction, before beginning installation. Installation not complete until appliance operation verified per Installation, Operation & Maintenance Manual provided with boiler.

1. Follow instructions TO TURN OFF GAS TO APPLIANCE found in Installation, Operation & Maintenance Manual. Verify all electrical power to boiler is turned off.

⚠ WARNING

Electrical shock hazard. Turn OFF electrical power supply at service panel.

2. Remove front jacket casing per instructions found in Installation, Operation & Maintenance Manual.

⚠ WARNING

Burn hazard. Verify heat exchanger has cooled or use appropriate personal protection equipment.

3. Remove control housing screw on lower right of control housing. See figure 1.
4. Slide control housing forward, it will fold down on its built in hinge. See figure 2
5. Remove two back cover screws. Remove back cover. See figure 2.
6. Disconnect all wiring connectors on control board. See figure 3.
7. Remove 2 screws holding board in place. Slide board out. See figure 3.
8. Replace board with new board, screw board in place. Connect wiring connectors on control board. See figure 3.
9. Replace back cover.
10. Fold control housing up and slide back into position. Secure with control housing screw. See figure 1.

Figure 1 - Control Housing Screw

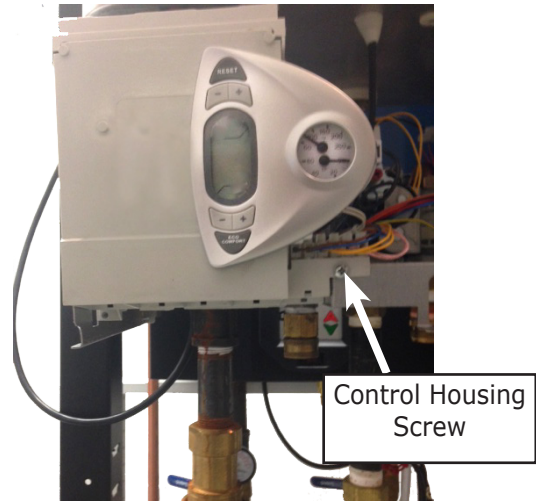


Figure 2 - Control Housing Folded Down on Hinge

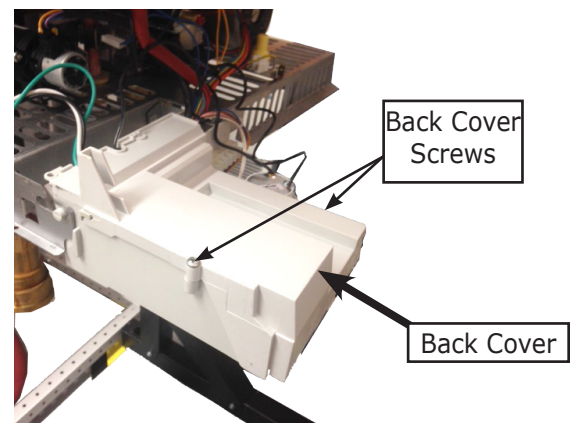
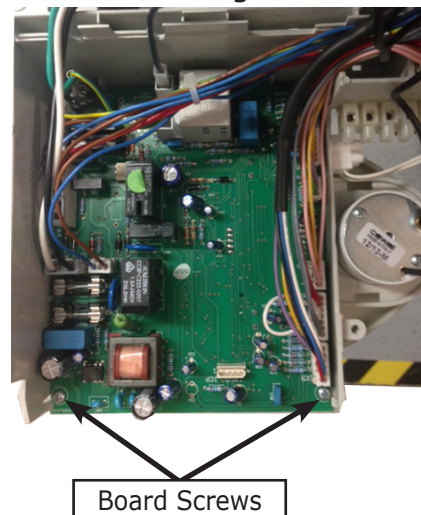


Figure 3 - Screws Holding Board



CONTROL BOARD REPLACEMENT KIT

11. Remove any call for heat or hot water.
12. Turn gas and electric power ON.
13. Power up boiler.
14. Configure control for proper boiler size and type.
15. To access the Parameter "tS" menu:
 - Press and hold Reset button for 10 seconds, display will read "tS", release button.
 - Press the Reset button for 1 second, display will read "P01".
 - Press Heating buttons to scroll the list of parameters. Press DHW buttons to view or change a parameter. Two Parameters need to be set "P01 & P02" as shown in figure 4.
16. To access Configuration menu:
 - Press DHW + & - (both) buttons and hold for 10 seconds; "b01" will appear flashing.
 - Press Heating buttons to scroll Configuration list. Press DHW buttons to view or change a setting.
 - Configuration "b01" is only one to be changed per chart in Figure 6.
 - When proper size is selected, press and hold DHW + & - (both) buttons for 10 seconds to exit, or turn power off then on, or wait two minutes for auto exit.
 - Boiler is now ready for operation
17. Verify proper operation by following START UP PROCEDURE in Installation, Operation & Maintenance Manual.
18. Install front jacket casing following instructions found in Installation & Maintenance Manual.

Figure 4 - Enter Configuration Menu

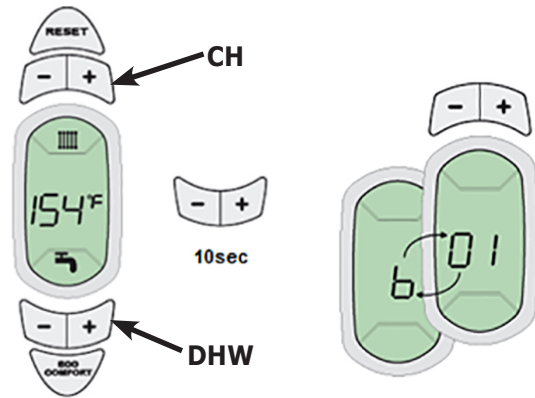


Figure 4 - Enter Parameter "tS" Menu

tS Menu		CCB-150	CHB-100	CHB-130
P01	Gas Type	0=Natural Gas; 1=LP Gas	0=Natural Gas; 1=LP Gas	0=Natural Gas; 1=LP Gas
P02	Boiler Type	1	2	2

Figure 6 - Proper Size Settings

Parameter	Description	Setting
b01	Curve Selection	Default =2
b01	CHB-100	0
b01	CHB-130	1
b01	CCB-150	2